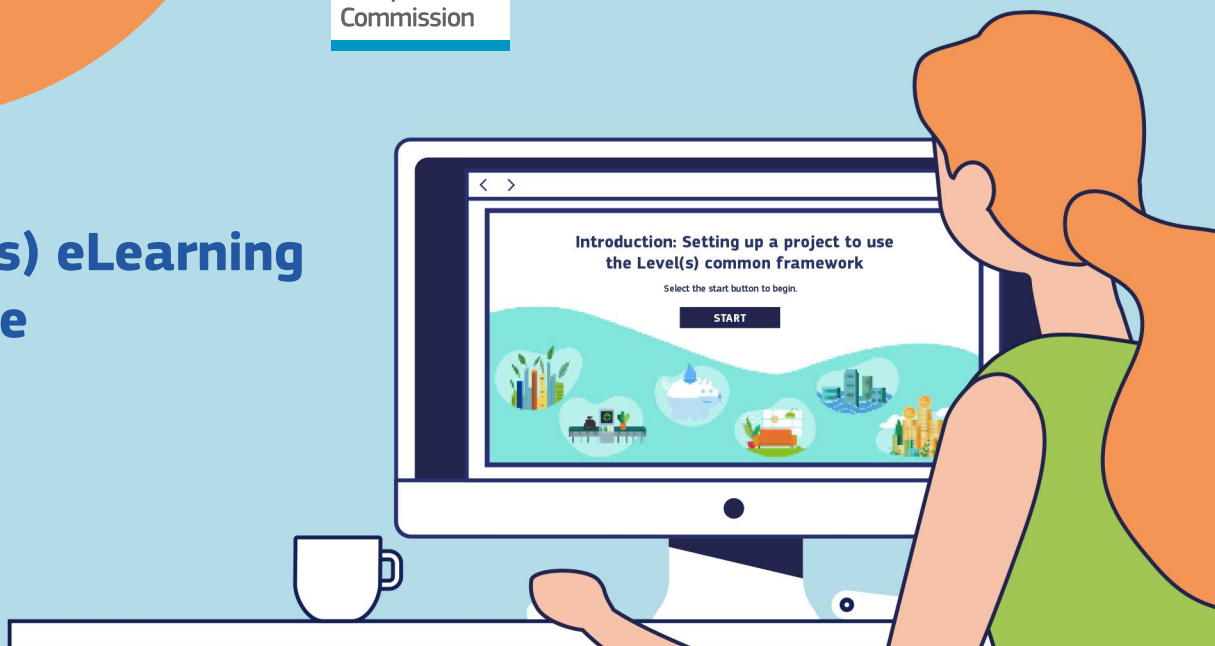


Quick guide

European
Commission

The Level(s) eLearning programme

©Shutterstock.com/MicroOne



Introduction

If you are interested in Level(s) but unsure where to start, don't worry. The Level(s) eLearning programme will help you to get going. The eLearning programme is also the perfect resource for users with some experience of Level(s) who want to improve their understanding in one or more aspects of the European common language for sustainable buildings.

Why access the eLearning programme?

The eLearning programme gives you a comprehensive introduction to Level(s) and the advantages of embracing it in your working environment. You will also learn how to complete a building assessment using Level(s) and how to apply Level(s) throughout the life cycle of a building project.



©Shutterstock.com/Anson_shutterstock

©Shutterstock.com/bsd studio

Environment

Is the eLearning programme for me?

The programme is for professionals involved in each or all of the different stages of the building lifecycle – whether you're new to Level(s) or more experienced. The course materials also highlight the roles and responsibilities for each type of building professional when using Level(s).

So, if you belong to one of the following groups, the Level(s) eLearning programme is for you.



Built environment and sustainability professionals



Policymakers / procurers / public authorities



Investors / property owners / landlords

©European Union

How is the course structured?

The programme is divided up into seven self-guided eLearning modules

We advise all users to take the opening Introduction module (Module 0), which will help you:

- get familiar with the purpose and metrics of the macro-objectives and indicators behind the Level(s) framework,
- define the assessment level appropriate to the project stage and identify the available information within the three available levels,
- learn how to use the different indicators at the three levels of assessment available, and
- learn how to complete a building description.

After completing the introduction, you can choose from a further six modules (Modules 1-6) covering each of the Level(s) macro objectives and their corresponding performance indicators. Each module takes you step by step through the indicators you are interested in. You will cover:

- the aim of each indicator,
- what you need in order to assess performance,
- what you need to measure, and
- the roles and responsibilities for each assessment.

Do I have to complete the whole eLearning programme?

No. Not unless you want to. With such a wide variety of buildings professionals interested in using Level(s), we have designed a programme that is fully customisable to suit different needs and interests.

This means you can pick and choose the modules that are most relevant to you or complete the programme from start to finish. Alternatively, you can select from five guided learning journeys, covering the following topics:

- | | | |
|-----------------------|----------------------------------|--------------------|
| ■ Circularity | ■ Resilience and future proofing | ■ Occupant welfare |
| ■ Sustainable finance | ■ Global warming | |

The colour-coded table below shows you which Level(s) indicators you will cover with each learning journey.

Completing the aspects of the eLearning programme relevant to your priorities will help to prepare you before you attempt your first sustainability performance assessment using Level(s).

5 learning journeys through the Level(s) macro-objectives and indicators

The following table shows the six Level(s) macro-objectives and indicators, all of which are covered throughout the eLearning programme, as well as five colour-coded learning journeys for those wishing to focus on specific topics.

Thematic areas	Macro-objectives	Indicators			
Resource use and environmental performance	1. Greenhouse gas emissions along a building's life cycle	1.1 Use stage energy performance (kWh/m ² /year) ● ● ●	1.2 Life cycle Global warming potential (CO ₂ eq./m ² /year) ● ●		
	2. Resource efficient and circular material life cycles	2.1 Bill of quantities, materials and lifespans ● ● ●	2.2 Construction and demolition waste ● ● ●	2.3 Design for adaptability and renovation ● ● ●	2.4 Design for deconstruction ● ● ●
	3. Efficient use of water resources	3.1 Use stage water consumption (m ³ /occupant/year) ● ● ●			
Health and comfort	4. Healthy and comfortable spaces	4.1 Indoor air quality ● ● ●	4.2 Time out of thermal comfort range ● ●	4.3 Lighting ●	4.4 Acoustics ● ●
Cost, value and risk	5. Adaption and resilience to climate change	5.1 Protection of occupier health and thermal comfort ● ●	5.2 Increased risk of extreme weather ●	5.3 Sustainable drainage ●	
	6. Optimised life cycle cost and value	6.1 Life cycle costs (€/m ² /year) ● ● ●	6.2 Value creation and risk factors ● ● ● ● ● ●		

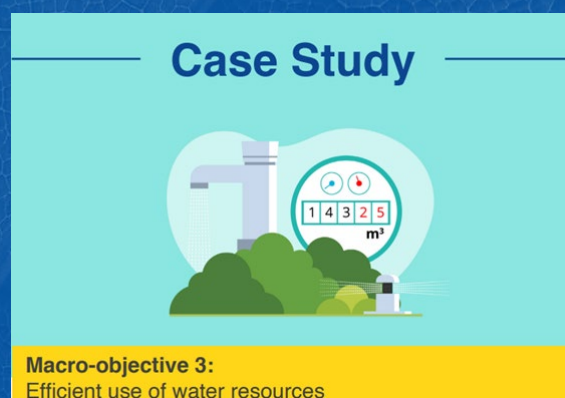
Legend: 5 guided learning journeys

● Circularity	● Global warming
● Sustainable finance	● Occupant welfare
● Resilience and future proofing	

See how to apply your knowledge with the eLearning case study

Throughout the eLearning programme you will explore a detailed case study showing how experts working on an office building project in Madrid applied each Level(s) indicator in their working environment. For example, Module 3 covers the Level(s) macro objective on the efficient use of water resources. After completing the module and reinforcing your knowledge with a quiz, the case study will show you how the team used Level(s) to assess and monitor sustainability performance on water consumption at Level 1 (during the conceptual design assessment), Level 2 (during the detailed design and construction stages) and at Level 3 (when the building was in use, following handover to the client).

You'll read about all the factors they took into consideration and see their data and calculations, giving you deeper insight into how to put Level(s) into practice on your project.



How is the eLearning programme assessed?

The eLearning programme exists purely to help you to apply Level(s) in your working environment, so there is no pass or fail, and no formal assessment! There are multiple choice quizzes throughout to help you test your own knowledge, but they are self-assessed and if you get answers wrong you can simply re-take them until you feel confident in your understanding.

How do I get going with the eLearning programme?

1. Get inspired

If you are not familiar with Level(s) please visit the Level(s) website to understand the basics before you start the eLearning programme.

2. Access the programme through the eLearning and tools page of the Level(s) website

Once you have accessed the course, we recommend you start by taking the eLearning Introduction Module. It will guide you through the framework, providing an overview of the macro-objectives and indicators.

3. Explore the modules and test your knowledge

You can complete any or all of the modules. Alternatively, you can follow one of the five recommended learning journeys. It's up to you! Test your knowledge by completing the quiz at the end of each module and see how the indicators work in practice with our case study for each indicator.

Access the eLearning programme today!

Accessing the course is simple to do, and free of charge, through the Level(s) website:

https://ec.europa.eu/environment/levels/lets-meet-levels/elearning-and-tools_en

The European Commission is not liable for any consequence stemming from the reuse of this publication.

Luxembourg: Publications Office of the European Union, 2022



© European Union, 2022

The reuse policy of European Commission documents is implemented based on Commission Decision 2011/833/EU of 12 December 2011 on the reuse of Commission documents (OJ L 330, 14.12.2011, p. 39). Except otherwise noted, the reuse of this document is authorised under a Creative Commons Attribution 4.0 International (CC-BY 4.0) licence (<https://creativecommons.org/licenses/by/4.0/>). This means that reuse is allowed provided appropriate credit is given and any changes are indicated.

For any use or reproduction of elements that are not owned by the European Union, permission may need to be sought directly from the respective rightholders.

Print ISBN 978-92-76-53181-4 doi:10.2779/744 KH-07-22-395-EN-C

PDF ISBN 978-92-76-53189-0 doi:10.2779/84904 KH-07-22-395-EN-N



Publications Office
of the European Union